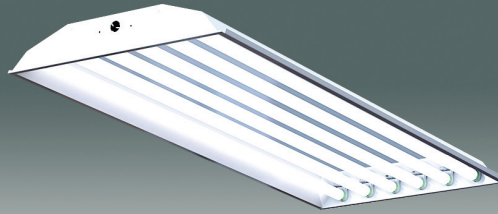


E-HPR SERIES
T8 COMMODITY HIGH BAY LUMINAIRE – 19.5” WIDE



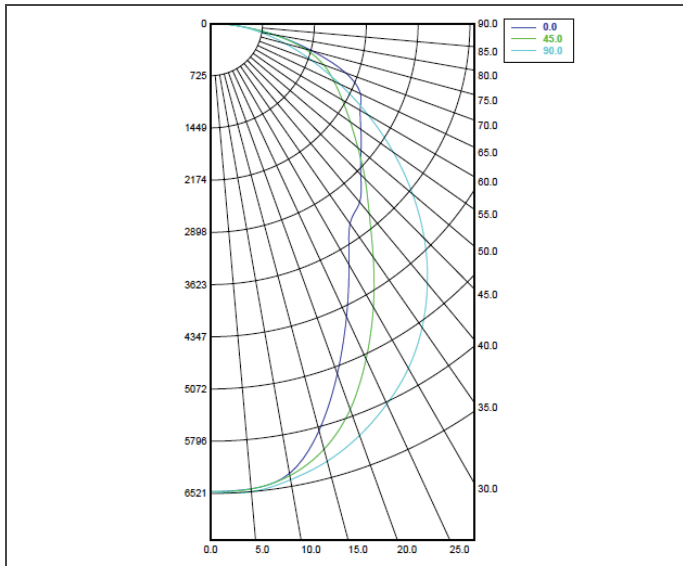
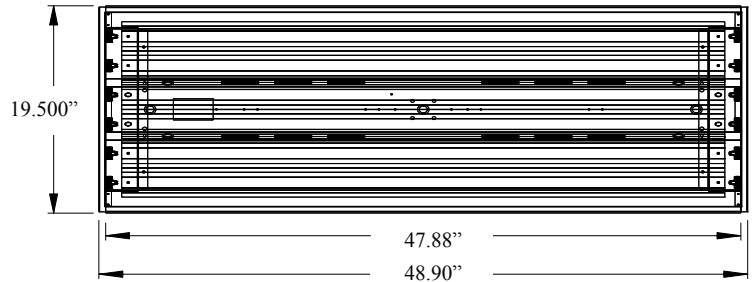
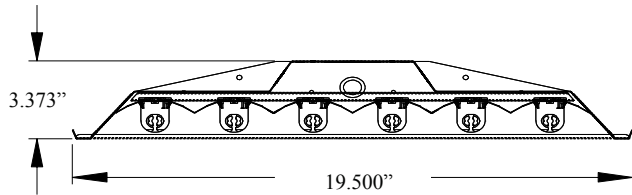
<p>Housing: 22GA steel. Finish: Baked white enamel, galvanized or post powdercoat steel. Construction: CNC formed and mechanically joined. Options: 11GA wireguard. Ballast: Designed for use with GE Proline Ballasts, a cost effective alternative ballast with higher wattage.</p>			<p>Mounting: Suspended or surface mounted. Distribution: Narrow to medium. Replacement for HID high bay. Electrical: Electronic GE Proline Low, Standard or High output options; Instant Start is factory standard; <10% THD; Inherent thermal protection; Emergency available. Labels: UL/CUL listed. Damp Location</p>		
SPEC.	NOM.	DESCRIPTION	SPEC.	NOM.	DESCRIPTION
Finish	P	Powdercoat gloss white	Lens	---	Open - no designation needed 11 Gauge galvanized wireguard
	G	Galvanized		WG	
Dimension	24	Nominal 19.5" wide x 48" long	Voltage	U	Universal volt 120-277 (factory standard) Emergency Battery Back-up 120v Emergency Battery Back-up 277v (T8 = 500 lumens)
				1B	
Lamping	4	T8 = 32W per lamp Lamps are not included unless otherwise noted (4) lamps in cross section (6) lamps in cross section	Reflector	E	Enhanced Aluminum 95% reflective White Aluminum 90%+ reflective
	6				
Ballast	S L H	Proline GE T8 Ballasts = higher wattage + economical Proline GE Ballast Standard Electronic T8 Proline GE Ballast Low Output Electronic T8 Proline GE Ballast High Output Electronic T8	Mounting	---	Surface Mounted (standard) - no designation needed Chain Suspended (by others) - no designation needed 2.5" Single Point Box (stem mount) 8ft Powercord, black 18/3 wire Y-fit Gripple® Toggle 6" Y x 8' long Shows as separate line item on order: part# H-Y6"HNGR-10'
				C	
Options	O A R M		Options	O	360° degree occupancy sensor Aisle occupancy sensor Relay Multi-circuit wiring
				A	

ORDERING NOMENCLATURE GUIDE

Standard Fixture: A-HPRW246HUE
 Catalog # for a HPR Type Fixture – Baked White Enamel - Nominal 2 ft x 4 ft Long - 6 Lamps in cross section - Proline GE T8 High Output Electronic Ballast - Open/No Lens - Universal Voltage - Enhanced Reflector - Standard Surface Mount - No Options.

8E Product	Series	Finish	Dimension	Lamping	Ballast	Lens	Voltage	Reflector	Mounting	Options
E -	HPR									

E-HPR SERIES
T8 COMMODITY HIGH BAY LUMINAIRE – 19.5” WIDE



PRODUCT NUMBER = E-HPRW246HUE

FIXTURE EFFICIENCY = 91.9%

S.M.H. = 0.95

WATTAGE = 210W (BASED ON 277V)

RCR TABLE AVAILABLE

IES PHOTOMETRIC FILE AVAILABLE

SPECIFICATION CHARACTERISTICS

- **Designed for Standard use with GE Proline Ballast for a Higher Wattage, Less Expensive Alternative**
- **Narrow to Medium Distribution Utilizing Energy Efficient Components Throughout**
- **Highly Efficient Luminaire – Over 91%**
- **Replaces 250 Watt - 400 Watt HID High Bay**
- **Instant On, Long Life, Lower Energy Consumption, No Color Shift**
- **Uniform Illumination**
- **Vented for Optimum Lamp Performance**
- **Quick-Wire Access Plate**
- **Emergency, Occupancy Sensor or Light Level Sensor Options**
- **Multiple Mounting Options: Surface Mount, Chain or Gripple Ready, Single Point Mounting Box or Cord**
- **Wire Guard Option**
- **Multiple Finish Options: Gloss White Post Powdercoated, Galvanized or Baked White Enamel Steel**
- **Short Lead Times**