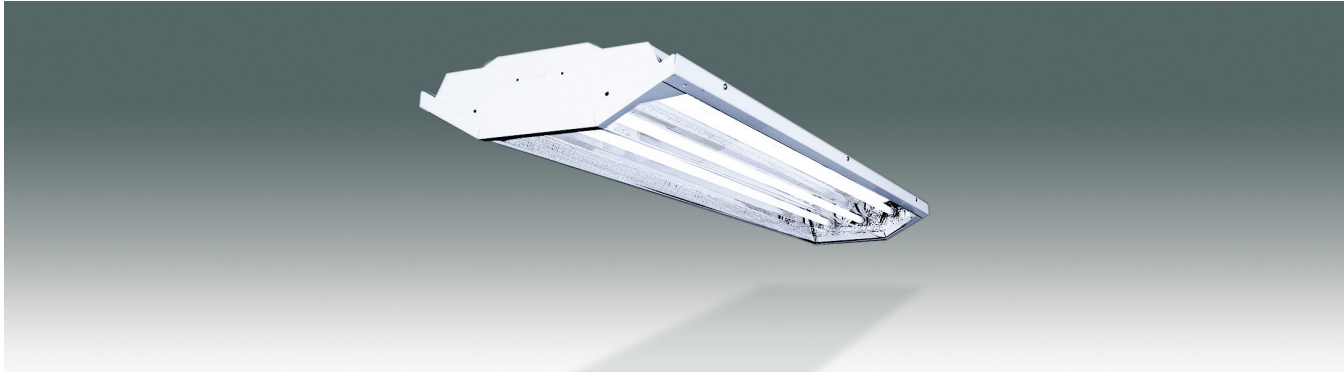


**E-LBCP SERIES**  
**T5 LOW BAY WRAP LUMINAIRE for COLD STORAGE FACILITIES**



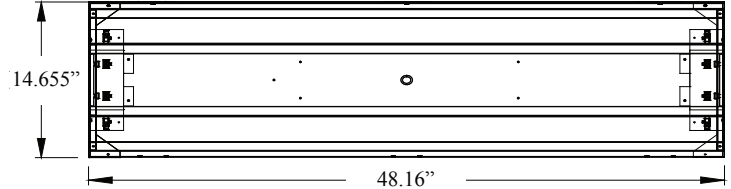
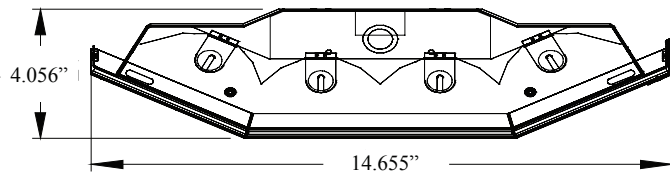
<p><b>Housing:</b> 22GA steel.  <b>Finish:</b> Housing is baked white enamel or post powdercoat steel. Door frame is always post powdercoated.  <b>Construction:</b> CNC formed and mechanically joined.  <b>Lens:</b> Acrylic or polycarbonate clear lens. Steel welded/gasketed, hinged door. Proprietary die cut insulation for heat retention.  <b>Lamping:</b> Option "L" recommended (lamps installed by factory).</p>			<p><b>Mounting:</b> Suspended or surface mounted.  <b>Distribution:</b> Medium to wide. Replacement for HID low bay.  <b>Electrical:</b> Electronic Standard or High output options; Program Start Ballast is factory standard; &lt;10% THD; Inherent thermal protection; Dimming &amp; Emergency available.  <b>Labels:</b> UL/CUL listed. Damp Location. Sealed &amp; Gasketed.</p>				
SPEC.	NOM.	DESCRIPTION	SPEC.	NOM.	DESCRIPTION		
Finish	W P	Baked white enamel	Lens	AC PC	Clear acrylic lens .090" thick		
		Powdercoat <b>gloss white</b>			Clear polycarbonate lens .090" thick		
Dimension	14 24	Nominal 15" wide x 48" long	Voltage	U H 1 2 3 4 1B 2B	Universal volt 120-277 (factory standard)		
		Nominal 20" wide x 48" long			347-480 volt		
Lamping	3 4 6 L	<b>T5 = 54W or 28W per lamp</b> <b>Factory installed lamps suggested. See Option L.</b> (3) lamps in cross section (1x4ft) (4) lamps in cross section (1x4ft) (6) lamps in cross section (2x4ft) LED – contact factory & specify voltage	Reflector	E W	Enhanced Aluminum 95% reflective		
					White Aluminum 90%+ reflective		
					Mounting	C --- --- Y	8' Powercord, black 18/3 wire
							Surface Mounted (standard) - no designation needed
Ballast	S5 H5 DS DH  LED LDD	<b>T5</b> Standard Electronic T5 28W High Output Electronic T5 54W Dimming Standard Electronic T5 28W – specify type & voltage Dimming High Output Electronic T5 54W – specify type & voltage  <b>LED</b> LED Transformer – contact factory LED Dimming Transformer – contact factory	Options	O A R M L	360° degree occupancy sensor		
					Aisle occupancy sensor		
					Relay		
					Multi-circuit wiring		
Lamps Installed - Recommended (shows as separate line item on order-specify CRI)							

**ORDERING NOMENCLATURE GUIDE**

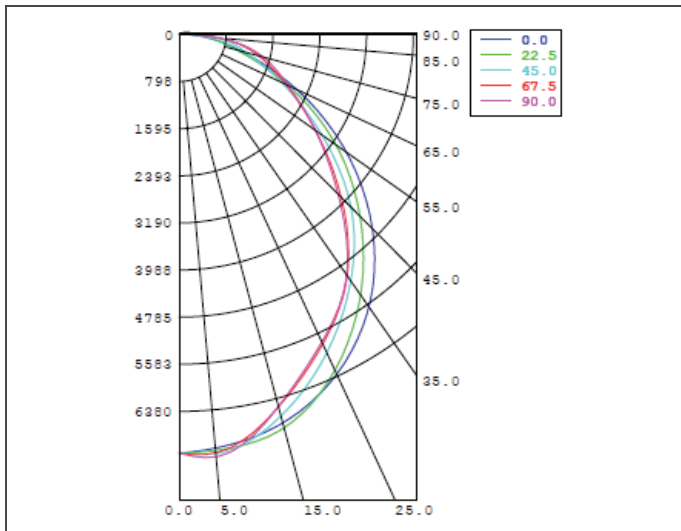
**Standard Fixture: E-LBCP144H5ACUEL**  
 Catalog # for a LBC Type Fixture – Powdercoat Gloss White - Nominal 1 ft x 4 ft Long - 4 Lamps in cross section - High Output T5 Electronic Ballast - Clear Acrylic Lens - Universal Voltage - Enhanced Reflector - Lamps Installed by Factory.

8E Product	Series	Finish	Dimension	Lamping	Ballast	Lens	Voltage	Reflector	Mounting	Options
<b>E -</b>	<b>LBC</b>									

**E-LBCP SERIES**  
**T5 LOW BAY WRAP LUMINAIRE for COLD STORAGE FACILITIES**



- 1x4ft 4 lamp version dimensions shown above
- 2x4ft 6 lamp version has wider housing at 19.75"



**PRODUCT NUMBER = E-LBCP144H5ACUE**  
**FIXTURE EFFICIENCY = 93.0%**  
**S.M.H. = 1.14**  
**WATTAGE = 234W (BASED ON 277V)**  
**RCR TABLE AVAILABLE**  
**IES PHOTOMETRIC FILE AVAILABLE**

**SPECIFICATION CHARACTERISTICS**

- **Medium to Wide Distribution Utilizing Energy Efficient Components Throughout**
- **Insulated for Sub Zero environments. Proprietary Die Cut Insulation for Heat Retention.**
- **Highly Efficient Luminaire – 93%**
- **Replaces 250 - 400 Watt HID Low Bay**
- **Instant On, Long Life, Lower Energy Consumption, No Color Shift**
- **T5 Application = 36,000 Hours (based on 12 hour starts)**
- **Uniform Illumination**
- **LED is Available – Contact Factory with Requirements**
- **Dimming, Emergency, Occupancy Sensor or Light Level Sensor Option**
- **Multiple Mounting Options: Surface Mount, Chain or Gripple Ready or Cord**
- **Multiple Lens Options: Clear Acrylic or Clear Polycarbonate Lens**
- **Integrally Hinged, Post Powder Coated Door Frame**
- **Multiple Finish Options: Gloss White Post Powdercoated or Baked White Enamel Steel. Other colors and finishes available. Please contact factory.**
- **Short Lead Times**