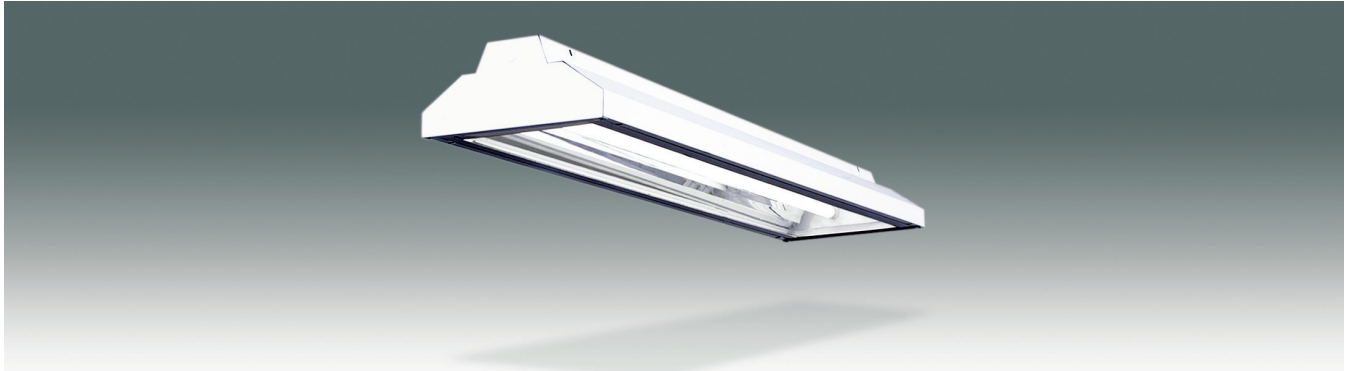


**E-G SERIES**  
**T8 or T5 GYM SPECIFICATION GRADE LUMINAIRE**



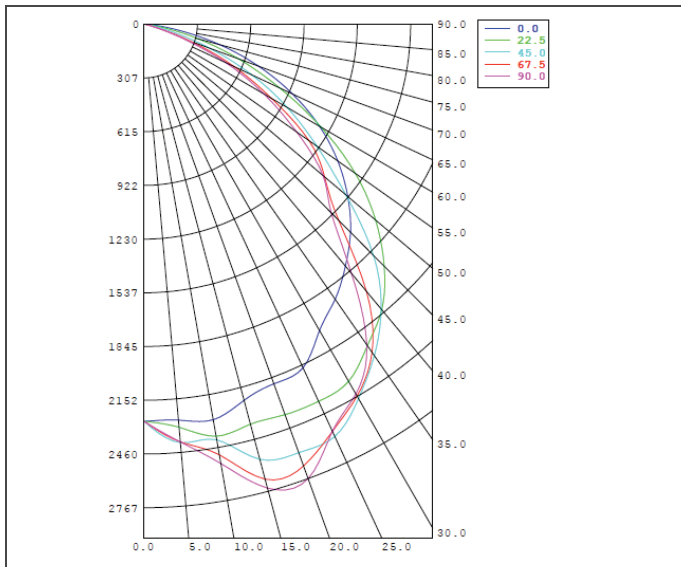
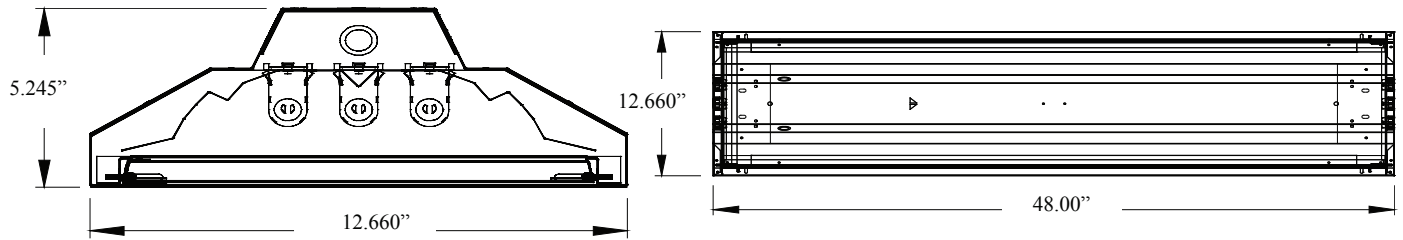
<p><b>Housing:</b> 22GA steel. <b>Finish:</b> Baked white enamel or post powdercoat steel. <b>Construction:</b> CNC formed and mechanically joined. <b>Lens:</b> Clear acrylic or polycarbonate lens or 11GA wireguard. Impact protected latching mechanism.</p>			<p><b>Mounting:</b> Suspended or surface mounted. <b>Distribution:</b> Narrow to medium. <b>Electrical:</b> Electronic Low, Standard or High output options; Instant Start is factory standard for T8, Program Start for T5; &lt;10% THD; Inherent thermal protection; Dimming &amp; Emergency available. <b>Labels:</b> UL/CUL listed. Damp Location.</p>		
SPEC.	NOM.	DESCRIPTION	SPEC.	NOM.	DESCRIPTION
Finish	---	Baked white enamel - no designation needed Powdercoat <b>gloss white</b>	Lens	<b>AC</b> <b>PC</b> <b>WG</b>	Clear acrylic lens .090" thick Clear polycarbonate lens .090" thick Flat 11 Gauge galvanized wireguard
Dimension	<b>14</b> <b>18</b>	Nominal 13" wide x 48" long Nominal 13" wide x 96" long	Voltage	<b>U</b> <b>H</b> <b>1</b> <b>2</b> <b>3</b> <b>4</b> <b>1B</b> <b>2B</b>	Universal volt 120-277 (factory standard) 347-480 volt 120 volt (specify with LED or dimming) 277 volt (specify with LED or dimming) 347 volt (specify with LED or dimming) 480 volt (specify with LED or dimming) Emergency Battery Back-up 120v Emergency Battery Back-up 277v (T8 = 500 lumens factory standard) (T5 std = 500 lumens or T5HO = 825 lumens)
Lamping	<b>2</b> <b>3</b> <b>4</b> <b>6</b> <b>L</b>	<b>T8 = 32W per lamp</b> <b>T5 = 54W or 28W per lamp</b> <b>Lamps are not included unless otherwise noted</b> (2) lamps in cross section (4ft only) (3) lamps in cross section (4ft only) (4) lamps - 2 in cross section (8ft only) (6) lamps - 3 in cross section (8ft only) LED – contact factory & specify voltage		Reflector	<b>E</b> <b>W</b>
Ballast	<b>S</b> <b>L</b> <b>H</b> <b>D</b> <b>P</b> <b>SP</b> <b>HP</b>	<b>T8</b> Standard Electronic T8 Low Output Electronic T8 High Output Electronic T8 Electronic Dimming T8 – specify type & voltage Program Start Electronic T8 Standard Output/Program Start Combination T8 High Output/Program Start Combination T8	Mounting	---	Surface Mounted (standard) - no designation needed Chain Suspended (by others) - no designation needed
	<b>S5</b> <b>H5</b> <b>DS</b> <b>DH</b> <b>LED</b> <b>LDD</b>	<b>T5</b> Standard Electronic T5 28W High Output Electronic T5 54W Dimming Standard Electronic T5 28W – specify type & voltage Dimming High Output Electronic T5 54W – specify type & voltage <b>LED</b> LED Transformer – contact factory LED Dimming Transformer – contact factory		<b>Y</b>	8ft Powercord, black 18/3 wire Y-fit Gripple® Toggle 6" Y x 8' long Shows as separate line item on order: part# H-Y6"HNGR-10'
Options	<b>M</b> <b>O</b> <b>A</b> <b>R</b> <b>Q</b>	Multi-circuit wiring 360° degree occupancy sensor Aisle occupancy sensor Relay Plug-in through-wiring			

**ORDERING NOMENCLATURE GUIDE**

**Standard Fixture: E-G143SPCUE**  
Catalog # for a G Type Fixture – Baked White Enamel - Nominal 1 ft x 4 ft Long - 3 Lamps in cross section - Standard T8 Electronic Ballast - Polycarbonate Lens - Universal Voltage - Enhanced Reflector - Standard Surface Mount - No Options.

8E Product	Series	Finish	Dimension	Lamping	Ballast	Lens	Voltage	Reflector	Mounting	Options
<b>E -</b>	<b>G</b>									

**E-G SERIES**  
**T8 or T5 GYM SPECIFICATION GRADE LUMINAIRE**



**PRODUCT NUMBER** = E-G143SPCUE  
**FIXTURE EFFICIENCY** = 77%  
**S.M.H.** = 1.46  
**WATTAGE** = 80W (BASED ON 277V)  
**RCR TABLE AVAILABLE**  
**IES PHOTOMETRIC FILE AVAILABLE**

**SPECIFICATION CHARACTERISTICS**

- **Narrow to Medium Distribution Utilizing Energy Efficient Components Throughout**
- **Highly Efficient Luminaire – 77%**
- **Instant On, Long Life, Lower Energy Consumption, No Color Shift**
- **Uniform Illumination**
- **LED is Available – Contact Factory with Requirements**
- **Dimming, Emergency Options**
- **Impact Protected Latching Mechanism - Recessed, Spring-Loaded Bullet Latches**
- **Optional Quick Connect Powerfeed Through-Wiring (3 circuits)**
- **Multiple Mounting Options: Surface Mount, Chain or Gripple Ready or Cord**
- **Multiple Lens Options: Acrylic or Polycarbonate Lens or Wireguard**
- **Multiple Finish Options: Gloss White Post Powdercoated or Baked White Enamel Steel**
- **Short Lead Times**