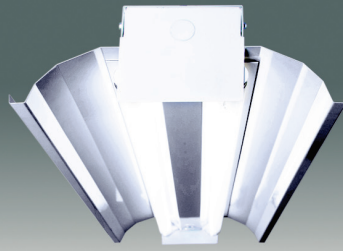


E-IH SERIES
T8 or T5 INDUSTRIAL with HOODED REFLECTOR



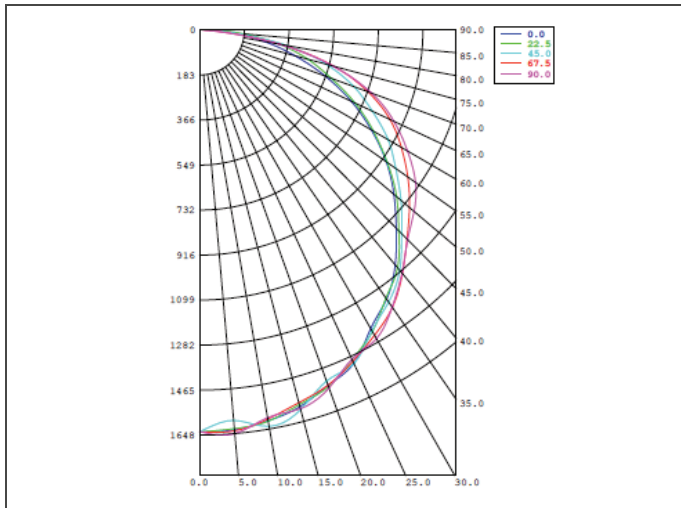
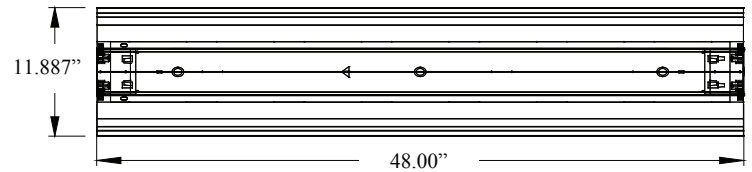
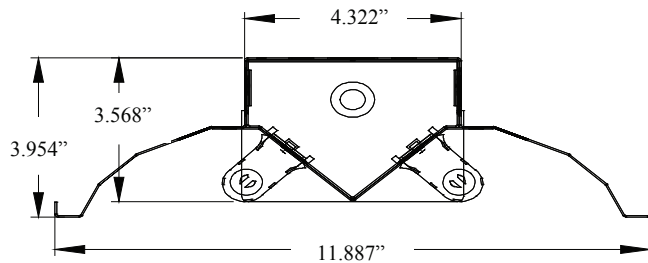
<p>Housing: 22GA steel. Finish: Galvanized or post powdercoat steel. Construction: CNC formed and mechanically joined. Lens: Optional 11GA wireguard.</p>			<p>Mounting: Suspended or surface mounted. Distribution: Narrow to medium. Electrical: Electronic Low, Standard or High output options; Instant Start is factory standard for T8, Program Start for T5; <10% THD; Inherent thermal protection; Dimming & Emergency available. Labels: UL/CUL listed. Damp Location.</p>		
SPEC.	NOM.	DESCRIPTION	SPEC.	NOM.	DESCRIPTION
Finish	G P	Galvanized	Lens	---	No lens (standard) - no designation needed 11 Gauge galvanized wireguard
		Powdercoat gloss white			
Dimension	14 18	Nominal 12" wide x 48" long	Voltage	U H 1B 2B	Universal volt 120-277 (factory standard) 347-480 volt Emergency Battery Back-up 120v Emergency Battery Back-up 277v (T8 = 500 lumens factory standard) (T5 std = 500 lumens or T5HO = 825 lumens)
		Nominal 12" wide x 96" long			
Lamping	1 2 3 4 6	T8 = 32W per lamp	Reflector	---	Powdercoated hood 90% reflective (standard) - no designation needed Powdercoated hood 90% reflective + 10% uplight slots Enhanced Aluminum 95% reflective Enhanced Aluminum 95% reflective + 10% uplight slots
		T5 = 54W or 28W per lamp			
		Lamps are not included unless otherwise noted			
		(1) lamp in cross section (4ft)			
		(2) lamps in cross section (4ft); 1 in cross (8ft)			
Ballast	S L H D P SP HP N S5 H5 DS DH	T8	Mounting	---	Surface Mounted (standard) - no designation needed Chain Suspended (by others) - no designation needed 8ft Powercord, black 18/3 wire Y-fit Gripple® Toggle 6" Y x 8' long Shows as separate line item on order: part# H-Y6"HNGR-10'
		Standard Electronic T8			
		Low Output Electronic T8			
		High Output Electronic T8			
		Electronic Dimming T8 – specify type & voltage			
		Program Start Electronic T8			
		Standard Output/Program Start Combination T8			
		High Output/Program Start Combination T8			
		No Ballast - Slave			
		T5			
Standard Electronic T5 28W					
High Output Electronic T5 54W					
Dimming Standard Electronic T5 28W – specify type & voltage					
Dimming High Output Electronic T5 54W – specify type & voltage					
Options	S M2 M3 M4 O A R M Q	Slave	Options	---	Slave Master 2 Lamp Master 3 Lamp Master 4 Lamp 360° degree occupancy sensor Aisle occupancy sensor Relay Multi-circuit wiring Plug-in through-wiring
		Master 2 Lamp			
		Master 3 Lamp			
		Master 4 Lamp			
		360° degree occupancy sensor			

ORDERING NOMENCLATURE GUIDE

Standard Fixture: E-IHP142SU
Catalog # for an IH Type Fixture – Powdercoated Gloss White - Nominal 1 ft x 4 ft Long - 2 Lamps in cross section - Standard T8 Electronic Ballast - No Lens - Universal Voltage - Powdercoated Hood - Standard Surface Mount - No Options.

8E Product	Series	Finish	Dimension	Lamping	Ballast	Lens	Voltage	Reflector	Mounting	Options
E -	IH									

E-IH SERIES
T8 or T5 INDUSTRIAL with HOODED REFLECTOR



PRODUCT NUMBER = E-IHP142SU
FIXTURE EFFICIENCY = 91.3%
S.M.H. = 1.37
WATTAGE = 52W (BASED ON 277V)
RCR TABLE AVAILABLE
IES PHOTOMETRIC FILE AVAILABLE

SPECIFICATION CHARACTERISTICS

- **Narrow to Medium Distribution Utilizing Energy Efficient Components Throughout**
- **Highly Efficient Luminaire – Over 91%**
- **Instant On, Long Life, Lower Energy Consumption, No Color Shift**
- **Uniform Illumination**
- **Dimming, Emergency, Occupancy Sensor or Light Level Sensor Options**
- **Multiple Mounting Options: Surface Mount, Chain or Gripple Ready or Cord**
- **Wireguard Option**
- **10% Uplight Slot Option**
- **Integral Hood – Lightweight Ballast Access Plate for Easy Ballast Access without Hood Removal**
- **Channel has Full Return Flange for Added Safety**
- **Rigid Continuous Row Connectors are Provided with Every Unit**
- **Optional Quick Connect Powerfeed Through-Wiring (3 circuits)**
- **Multiple Finish Options: Gloss White Post Powdercoated or Galvanized Steel**
- **Short Lead Times**