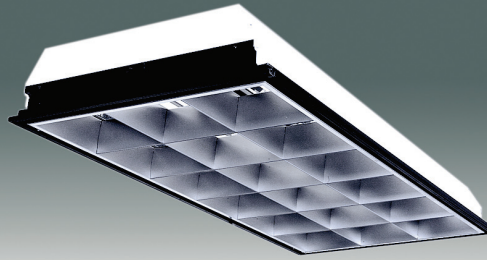


**E-DC SERIES
T8 or T5 DEEP CELL RECESSED**

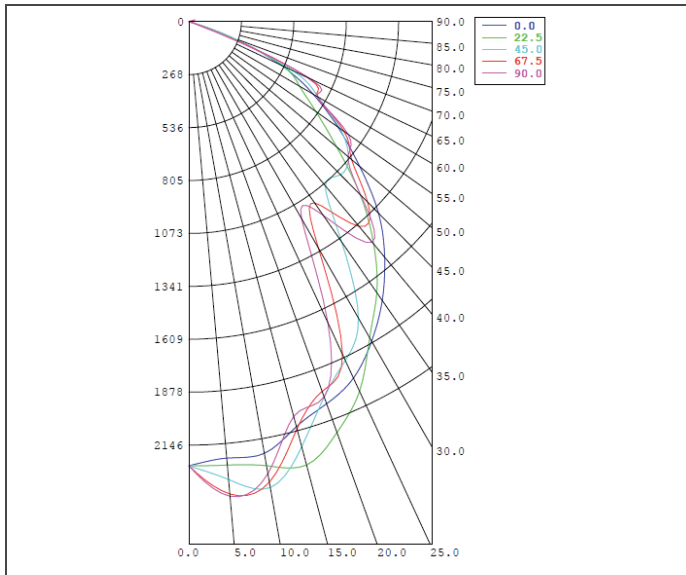
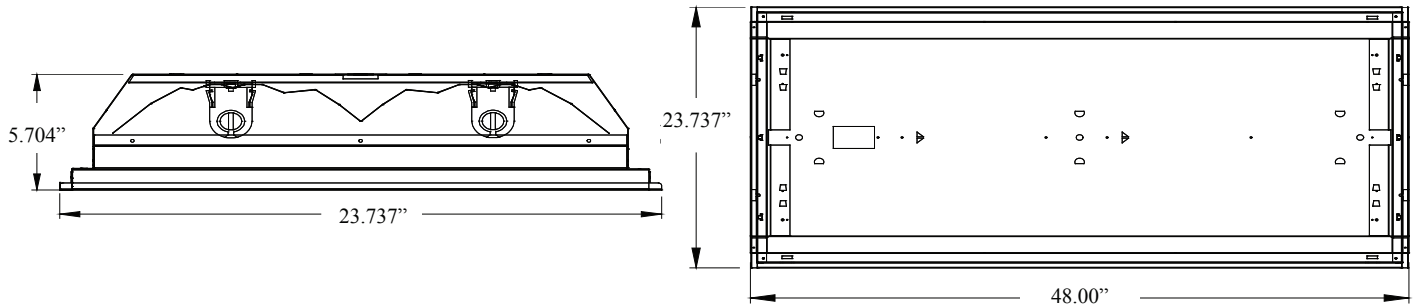


<p>Housing: 22GA steel. New York City code 20GA available. Finish: Baked white enamel housing. Baked black enamel frame. Construction: CNC formed and mechanically joined. Lens: Deep cell, semi-specular or full-specular louver.</p>			<p>Mounting: Recessed. Distribution: Medium. Electrical: Electronic Low, Standard or High output options; Instant Start is factory standard for T8, Program Start for T5; <10% THD; Inherent thermal protection; Dimming & Emergency available. Labels: UL/CUL listed. Damp Location.</p>		
SPEC.	NOM.	DESCRIPTION	SPEC.	NOM.	DESCRIPTION
Finish	---	Baked white enamel - no designation needed	Lens	SS9 SS12 SS18 FS18	3" Deep cell louver 9 cell semi-specular (2ft only) 3" Deep cell louver 12 cell semi-specular (4ft only) 3" Deep cell louver 18 cell semi-specular (4ft only) 3" Deep cell louver 18 cell full-specular (4ft only)
Dimension	22 24	Nominal 24" wide x 24" long Nominal 24" wide x 48" long	Voltage	U H 1B 2B	Universal volt 120-277 (factory standard) 347-480 volt Emergency Battery Back-up 120v Emergency Battery Back-up 277v (T8 = 500 lumens factory standard) (T5 std = 500 lumens or T5HO = 825 lumens)
Lamping	2 3 4	T8 = 32W, 17W per lamp T5 = 54W, 21W or 28W, 14W per lamp Biax = 40W or 55W per lamp Lamps are not included unless otherwise noted (2) lamps in cross section (3) lamps in cross section (4) lamps in cross section	Reflector	E W ---	Enhanced Aluminum 95% reflective White Aluminum 90%+ reflective No Reflector
Ballast	S L H D P SP HP N	T8 Standard Electronic T8 Low Output Electronic T8 High Output Electronic T8 Electronic Dimming T8 – specify type & voltage Program Start Electronic T8 Standard Output/Program Start Combination T8 High Output/Program Start Combination T8 No Ballast - Slave	Mounting	---	Recessed Mounted (standard) - no designation needed
	S5 H5 DS DH BE	T5 or Biax Standard Electronic T5 28W High Output Electronic T5 54W Dimming Standard Electronic T5 28W – specify type & voltage Dimming High Output Electronic T5 54W – specify type & voltage Biax Electronic		Options	M R N

ORDERING NOMENCLATURE GUIDE

Standard Fixture: E-DC242SSS18UE										
Catalog # for a DC Type Fixture – Baked White Enamel - Nominal 2 ft x 4 ft Long - 2 Lamps in cross section - Standard T8 Electronic Ballast - Semi-Specular 18 Cell Louver - Universal Voltage - Enhanced Reflector - Standard Recessed Mount - No Options.										
8E Product	Series	Finish	Dimension	Lamping	Ballast	Lens	Voltage	Reflector	Mounting	Options
E -	DC									

E-DC SERIES
T8 or T5 DEEP CELL RECESSED



PRODUCT NUMBER = E-DC242SSS18UE

FIXTURE EFFICIENCY = 84.8%

S.M.H. = 0.99

WATTAGE = 52W (BASED ON 277V)

RCR TABLE AVAILABLE

IES PHOTOMETRIC FILE AVAILABLE

SPECIFICATION CHARACTERISTICS

- **Medium Distribution Utilizing Energy Efficient Components Throughout**
- **Highly Efficient Luminaire – Over 84%**
- **Instant On, Long Life, Lower Energy Consumption, No Color Shift**
- **Uniform Illumination**
- **Dimming, Emergency Options**
- **True Semi-Specular, Low Iridescence Louver or Full-Specular Available**
- **Spring Loaded Cam Latches**
- **Integrated Earthquake Wire Attachment Points**
- **Quick-Wire Access Plate**
- **Finish: Baked White Enamel Steel · Louver Fully Skirted with Black Reveal**
- **20GA Housing Available for New York City Code Requirements for Recessed Fixtures**
- **Short Lead Times**