

E-VP SERIES
T8 or T5 DIRECT/INDIRECT PERFORATED VEIL RECESSED



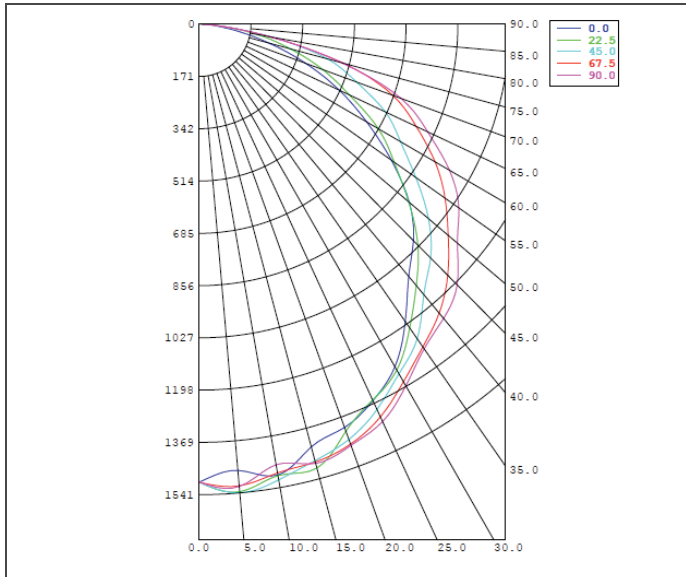
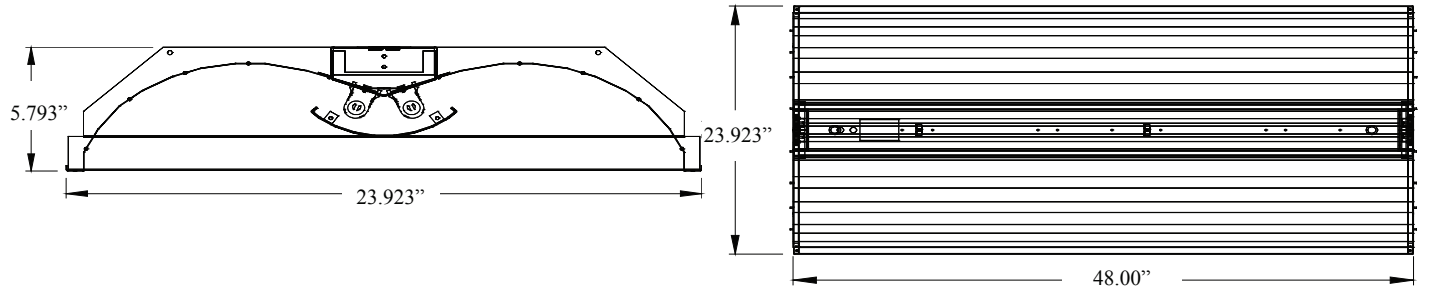
<p>Housing: 24GA steel. New York City code 20GA available. Finish: Post powdercoat gloss white. Construction: CNC formed and mechanically joined. Lens: Post powdercoated perforated veil.</p>			<p>Mounting: Recessed. Distribution: Medium Direct/Indirect. Electrical: Electronic Low, Standard or High output options; Instant Start is factory standard for T8, Program Start for T5; <10% THD; Inherent thermal protection; Dimming & Emergency available. Labels: UL/CUL listed. Damp Location.</p>		
SPEC.	NOM.	DESCRIPTION	SPEC.	NOM.	DESCRIPTION
Finish	P	Powdercoat gloss white	Lens	P1 P2	20% Open Perforated Veil (standard) 20% Open Perforated Veil includes mylar acrylic lens overlay
Dimension	14 18 22 24	Nominal 12" wide x 48" long Nominal 12" wide x 96" long Nominal 24" wide x 24" long Nominal 24" wide x 48" long	Voltage	U H 1B 2B	Universal volt 120-277 (factory standard) 347-480 volt Emergency Battery Back-up 120v Emergency Battery Back-up 277v (T8 = 500 lumens factory standard) (T5 std = 500 lumens or T5HO = 825 lumens)
Lamping	2 3 4	T8 = 32W, 17W per lamp T5 = 54W, 21W or 28W, 14W per lamp Lamps are not included unless otherwise noted (2) lamps in cross section (1x4ft, 2x2ft, 2x4ft) (3) lamps in cross section (2x2ft, 2x4ft) (4) lamps - 2 in cross section (8ft only)	Reflector	---	No Reflector – Housing is the reflector
Ballast	S L H D P SP HP N	<p align="center">T8</p> Standard Electronic T8 Low Output Electronic T8 High Output Electronic T8 Electronic Dimming T8 – specify type & voltage Program Start Electronic T8 Standard Output/Program Start Combination T8 High Output/Program Start Combination T8 No Ballast - Slave	Mounting	---	Recessed Mounted (standard) - no designation needed
			S5 H5 DS DH	<p align="center">T5</p> Standard Electronic T5 28W High Output Electronic T5 54W Dimming Standard Electronic T5 28W – specify type & voltage Dimming High Output Electronic T5 54W – specify type & voltage	Options

ORDERING NOMENCLATURE GUIDE

Standard Fixture: E-VP242SP1U
 Catalog # for a V Type Fixture – Powdercoat Gloss White - Nominal 2 ft x 4 ft Long - 2 Lamps in cross section - Standard T8 Electronic Ballast - 20% Open Perforated Veil - Universal Voltage - No Reflector- Standard Recessed Mount - No Options.

8E Product	Series	Finish	Dimension	Lamping	Ballast	Lens	Voltage	Reflector	Mounting	Options
E -	V									

E-VP SERIES
T8 or T5 DIRECT/INDIRECT PERFORATED VEIL RECESSED



PRODUCT NUMBER = E-VP242SP1U

FIXTURE EFFICIENCY = 80.2%

S.M.H. = 1.35

WATTAGE = 52W (BASED ON 277V)

RCR TABLE AVAILABLE

IES PHOTOMETRIC FILE AVAILABLE

SPECIFICATION CHARACTERISTICS

- **Medium Distribution Utilizing Energy Efficient Components Throughout**
- **Highly Efficient Luminaire – Over 80%**
- **Instant On, Long Life, Lower Energy Consumption, No Color Shift**
- **Uniform Illumination**
- **Dimming, Emergency Options**
- **Quick-Wire Access Plate**
- **Softglo Post Powdercoated Perforated Veil Provides Unparalleled Visual Comfort**
- **20GA Housing Available for New York City Code Requirements for Recessed Fixtures**
- **Short Lead Times**