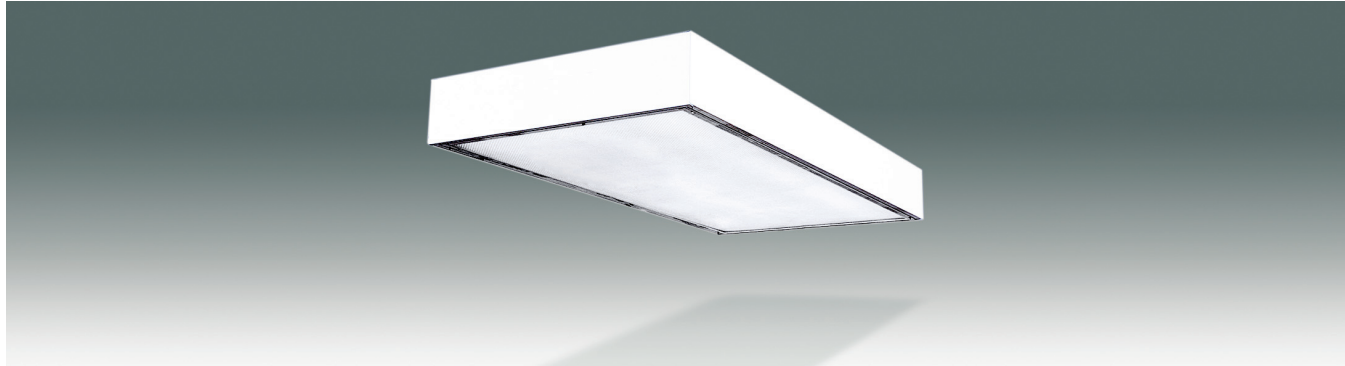


Project:
Type:
Quantity:

E-S SERIES
T8 or T5 SURFACE MOUNT – 24” or 48” wide



Housing: 20GA steel. Finish: Post powdercoat gloss white. Construction: CNC formed and mechanically joined. Welded ends. Lens: Prismatic or clear flat lens, drop dish lens, deep cell louver, paracube or wireguard.			Mounting: Surface mounted. Distribution: Medium. Electrical: Electronic Low, Standard or High output options; Instant Start is factory standard for T8, Program Start for T5; <10% THD; Inherent thermal protection; Dimming & Emergency available. Labels: UL/CUL listed. Damp Location.		
SPEC.	NOM.	DESCRIPTION	SPEC.	NOM.	DESCRIPTION
Finish	---	Powdercoat gloss white – no designation needed. Please specify other color on PO if required.	Lens	PR	Prismatic Lens A12 .110” thick
Dimension	22	Nominal 24” wide x 24” long		AC	Clear acrylic lens .090” thick
	24	Nominal 24” wide x 48” long		PC	Clear polycarbonate lens .090” thick
	44	Nominal 48” wide x 48” long		A9	Prismatic Lens A19 .110” thick
Lamping		T8 = 32W, 17W per lamp T5 = 54, 21W or 28W, 14W per lamp Biax = 55W or 40W per lamp Lamps are not included unless otherwise noted	DA	Drop Dish Acrylic	
	2	(2) lamps in cross section (2x2, 2x4)	DP	Drop Dish Polycarbonate	
	3	(3) lamps in cross section (2x2, 2x4)	DO	Drop Dish Opal	
	4	(4) lamps in cross section (2x2, 2x4, 4x4)	DC9	3” Deep cell louver 9 cell (2ft only)	
	6	(6) lamps in cross section (2x4, 4x4)	DC12	3” Deep cell louver 12 cell (4ft only)	
	8	(8) lamps in cross section (4x4)	DC18P	3” Deep cell louver 18 cell (4ft only)	
	10	(10) lamps in cross section (4x4)	S15	Paracube Lens 1.5” cell spacing	
Ballast		LED – contact factory & specify voltage	WG	Flat 11 Gauge galvanized wireguard	
	S	T8 Standard Electronic T8	N	No lens	
	L	Low Output Electronic T8	Voltage	U	Universal volt 120-277 (factory standard)
	H	High Output Electronic T8		H	347-480 volt
	D	Electronic Dimming T8 – specify type & voltage		1	120 volt (specify with LED or dimming)
	P	Program Start Electronic T8		2	277 volt (specify with LED or dimming)
	SP	Standard Output/Program Start Combination T8		3	347 volt (specify with LED or dimming)
	HP	High Output/Program Start Combination T8		4	480 volt (specify with LED or dimming)
	S5	T5 or Biax Standard Electronic T5 28W	1B	Emergency Battery Back-up 120v	
	H5	High Output Electronic T5 54W	2B	Emergency Battery Back-up 277v (T8 = 500 lumens factory standard) (T5 std = 500 lumens or T5HO = 825 lumens)	
BE	Biax Electronic	Reflector	E	Enhanced Aluminum 95% reflective	
DS	Dimming Standard Electronic T5 28W – specify type & voltage		W	White Aluminum 90%+ reflective	
DH	Dimming High Output Electronic T5 54W – specify type & voltage	---	No Reflector		
LED	LED Transformer – contact factory	Mounting	---	Surface Mounted (standard) - no designation needed	
LDD	LED Dimming Transformer – contact factory		Options	M	Multi-circuit wiring
		O		360° degree occupancy sensor	
		A		Aisle occupancy sensor	
		R		Relay	

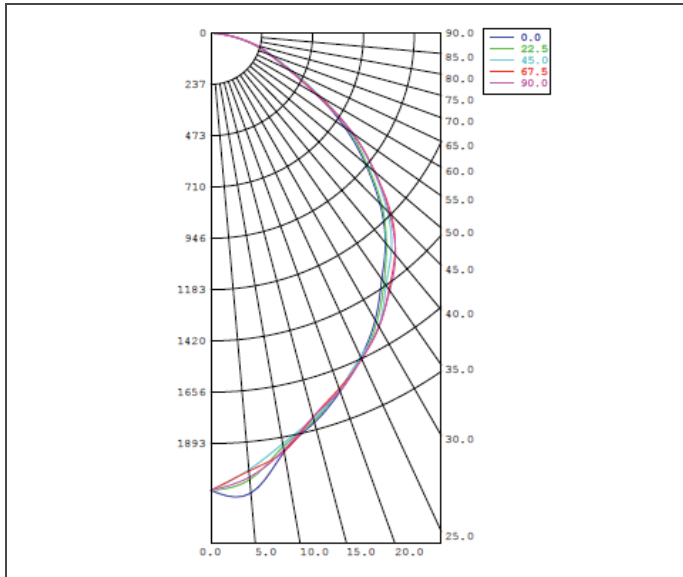
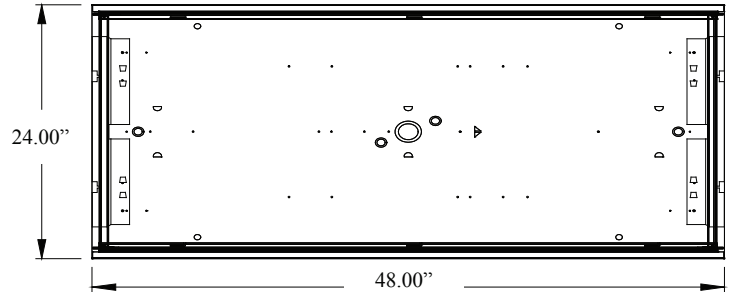
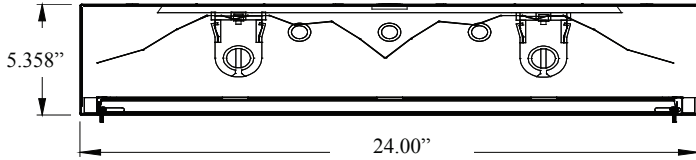
ORDERING NOMENCLATURE GUIDE

Standard Fixture: E-S242SPRUE
Catalog # for a S Type Fixture – Powdercoated Gloss White - Nominal 2 ft x 4 ft Long - 2 Lamps in cross section - Standard T8 Electronic Ballast - Prismatic Lens - Universal Voltage - Enhanced Reflector - Standard Surface Mount - No Options.

8E Product	Series	Finish	Dimension	Lamping	Ballast	Lens	Voltage	Reflector	Mounting	Options
E -	S									

E-S SERIES
T8 or T5 SURFACE MOUNT – 24” or 48” wide

2' x 4' version dimensions shown.



PRODUCT NUMBER = E-S242SPRUE
FIXTURE EFFICIENCY = 77.5 %
S.M.H. = 1.11
WATTAGE = 52W (BASED ON 277V)
RCR TABLE AVAILABLE
IES PHOTOMETRIC FILE AVAILABLE

SPECIFICATION CHARACTERISTICS

- **Medium Distribution Utilizing Energy Efficient Components Throughout**
- **Highly Efficient Luminaire – Over 77%**
- **Instant On, Long Life, Lower Energy Consumption, No Color Shift**
- **Uniform Illumination**
- **LED is Available – Contact Factory with Requirement**
- **Dimming, Emergency Options**
- **Spring-Loaded Bullet Latches allow Opening from Any Side**
- **Gasketed to Eliminate Light Leaks and Reduce Bugs**
- **Multiple Lens Options: Wireguard; Prismatic, Clear Acrylic or Polycarbonate Lens; Deep Cell Louver or Paracube**
- **Finish: Gloss White Post Powdercoated. Other finishes available. Please contact factory.**
- **Short Lead Times**