

**E-SD SERIES
CF SURFACE DRUM**



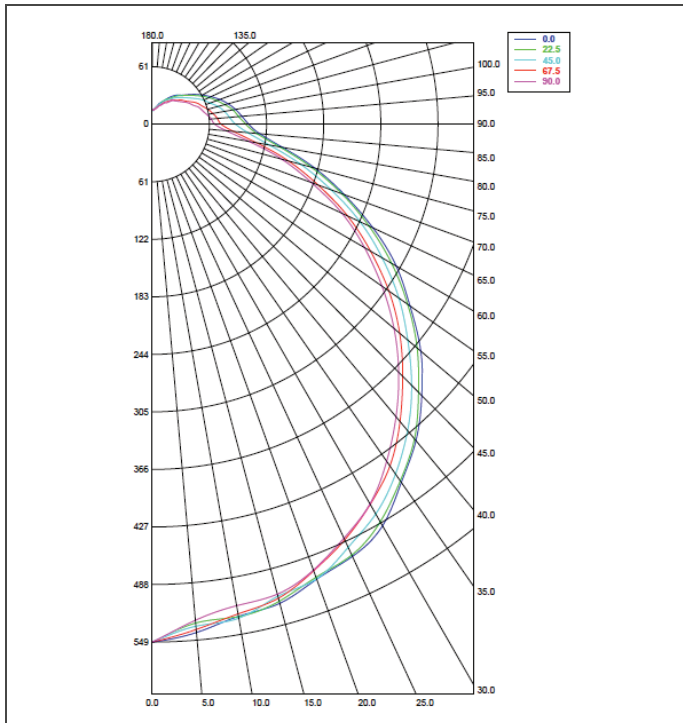
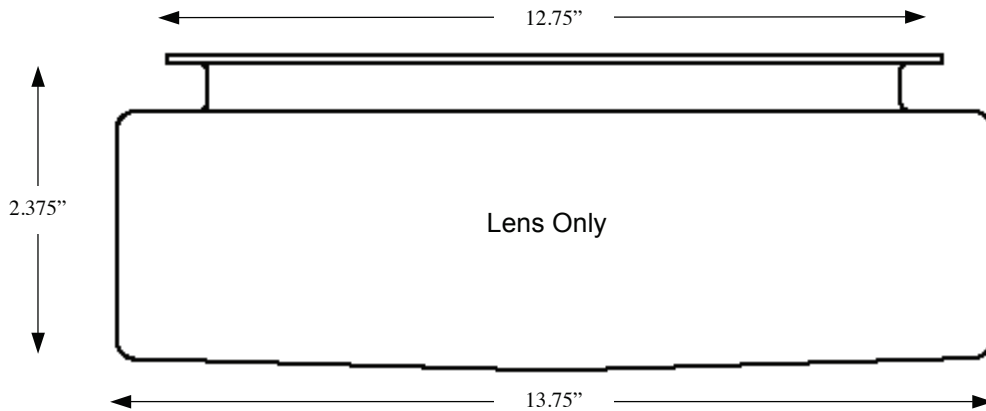
<p>Housing: 24GA steel. Finish: Post powdercoat gloss white. Construction: Stamped steel pan. Lens: Translucent white acrylic. Lamping: 800 series lamps included in all fixtures.</p>			<p>Mounting: Surface mounted. Retrofit over existing recessed incandescent or electrical boxes. Distribution: Wide distribution spreads light for low ceiling heights. Electrical: Electronic Program Start is factory standard; <10% THD; Inherent thermal protection. Labels: UL/CUL listed. Damp Location.</p>		
SPEC.	NOM.	DESCRIPTION	SPEC.	NOM.	DESCRIPTION
Finish	---	Powdercoat gloss white - no designation needed	Lens	TW	Translucent White Acrylic Lens
Dimension	11	Nominal 14" round	Voltage	U 3	Universal volt 120-277 (factory standard) 347 volt
Lamping	2	T4 = 13W, 26W per lamp 800 series lamps included. Please specify color. (2) CF lamping			
Ballast	E13	Electronic 13watt CF Ballast	Options	P	Button photocell sensor
	E26	Electronic 26watt CF Ballast			

ORDERING NOMENCLATURE GUIDE

Standard Fixture: E-SD112E26TWU
 Catalog # for a SD Type Fixture – Powdercoated Gloss White - 2 Lamps - Standard 26W CF Electronic Ballast - Acrylic Translucent White Lens - Universal Voltage - Standard Surface Mount - Lamps Included.

8E Product	Series	Finish	Dimension	Lamping	Ballast	Lens	Voltage	Mounting	Options
E -	SD								

**E-SD SERIES
CF SURFACE DRUM**



PRODUCT NUMBER = E-SD112E26TWU
FIXTURE EFFICIENCY = 59.9%
S.M.H. = 1.31
WATTAGE = 60W (BASED ON 277V)
RCR TABLE AVAILABLE
IES PHOTOMETRIC FILE AVAILABLE

SPECIFICATION CHARACTERISTICS

- **Wide Distribution Utilizing Energy Efficient Components Throughout**
- **Highly Efficient Luminaire – Over 59%**
- **Instant On, Long Life, Lower Energy Consumption, No Color Shift**
- **Uniform Illumination**
- **Wide Distribution Spreads Light for Low Ceiling Heights.**
- **Translucent White Acrylic Lens**
- **Finish: Gloss White Post Powdercoated**
- **Short Lead Times**